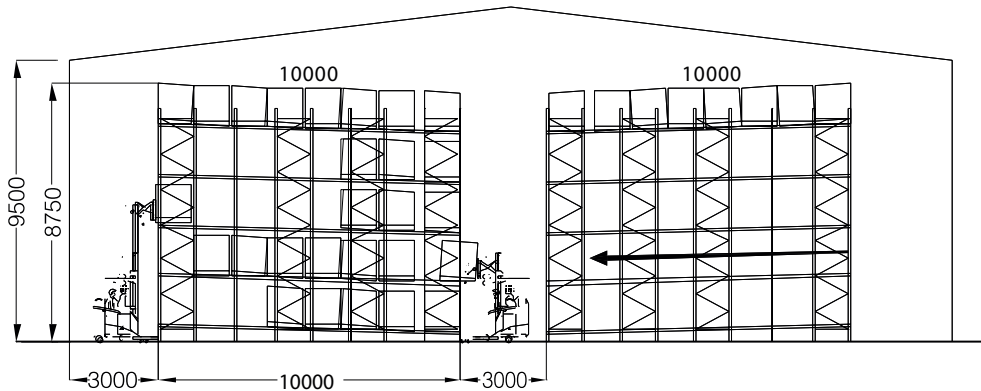


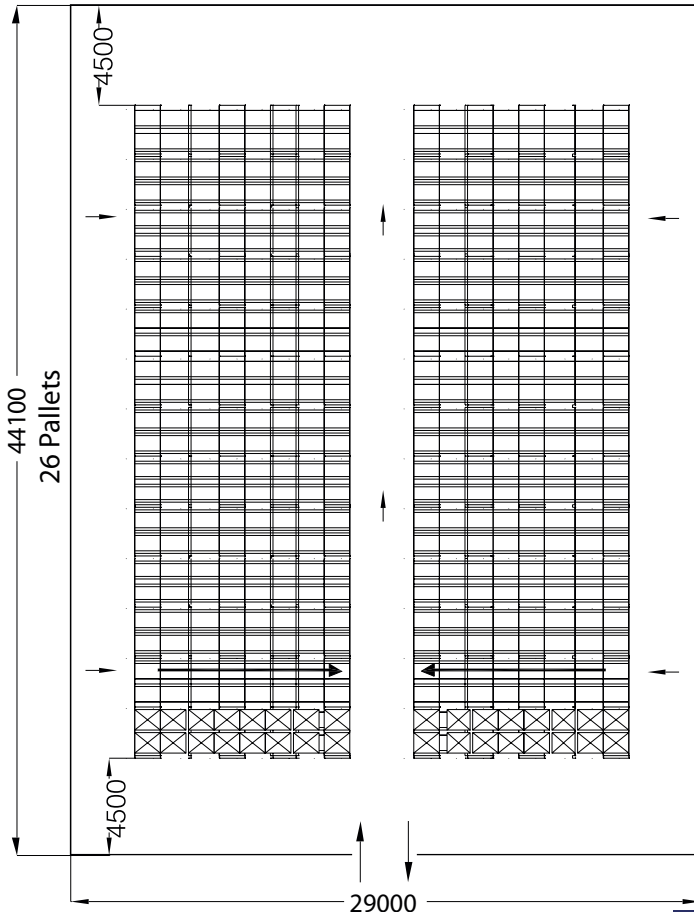
FLOW THRU PALLET RACKING

Specially constructed lanes of gravity inclined tracks stacked side by side and on top of each other within a pallet rack framework form a solid block of storage that is fed in from one end and unloaded at the other. Consistent loads are stored in each lane, for the same SKU. Automatic rotation is provided. Rack utilisation is often at 90%.



Advantages

- △ Very dense storage achieved especially when few SKU's and high number of pallets
- △ FIFO guaranteed, ideal for products with shelf life or absolute rotation
- △ Secure and safe handling as the pallet truck does not enter the rack
- △ Stable loads and constant, high quantity pallet mandatory
- △ Wide range of pallets can be accommodated at the design stage



Pallet and Load Size :
1165mm (Entry) x 1165mm x
1350m (H)

Floor Area :
44.1m x 29m = 1279 sqm

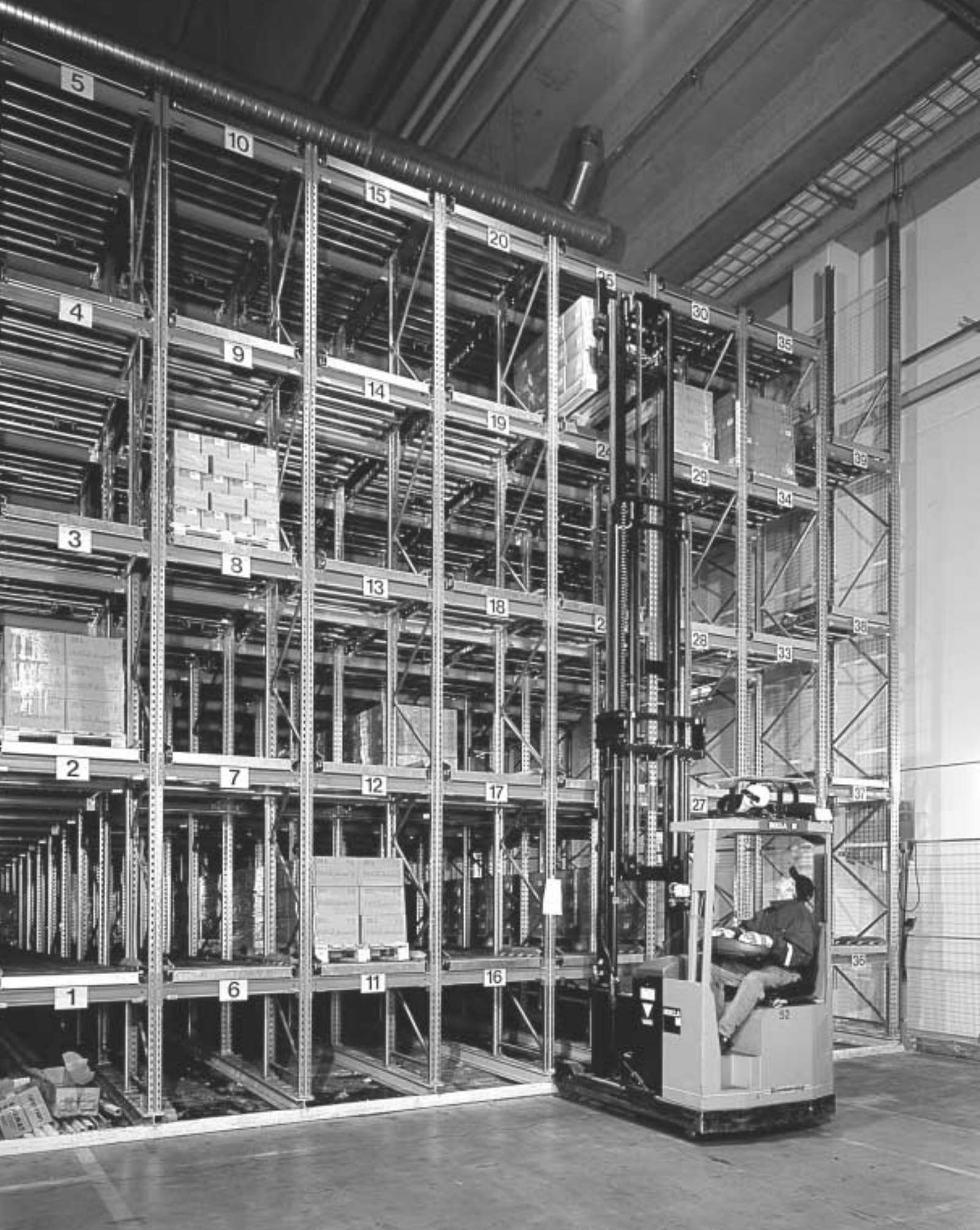
Total Building Volume :
12150 cbm (9.5m High)

Average Floor Area/Pallet Position :
1279 sqm/2080 Pallets =
0.615 sqm/Pallet Position

Average Building
Volume/Pallet Position :
12150 cbm/2080 Pallets =
5.84 cbm/Pallet

**FLOW THRU RACK FOR 2080
PALLET**

Flow-Rite Inc
High Density Storage Specialists



Flow-Rite Inc
High Density Storage Specialists